



GLASS EXPANSION

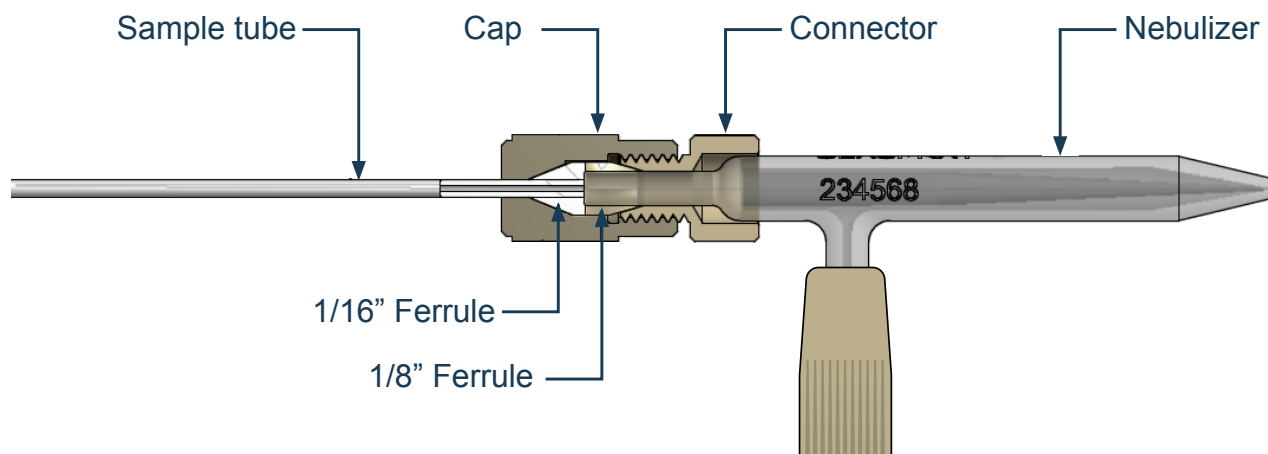
Quality By Design

Instructions for Nebulizer Sample Connecting Line Kit

P/N 70-803-2109

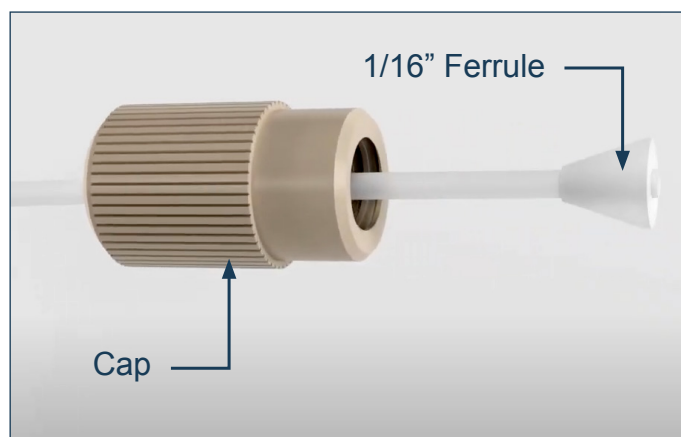
Disclaimer: Glass Expansion supplies products to customers with the assumption that only qualified individuals who are properly trained in the appropriate procedures will use our products. It is our customer's entire responsibility to safely store, handle and use the products ordered from Glass Expansion. We assume the requisitioner to be experienced, competent, safety conscious professionals. Glass Expansion assumes no liability for any damage or injuries -physical, emotional or mental, arising out of persons incorrectly or inappropriately using or handling our products. We also assume no liability for any damage to an instrument or product from incorrect installation, handling or use of the product by the user.

Diagram:

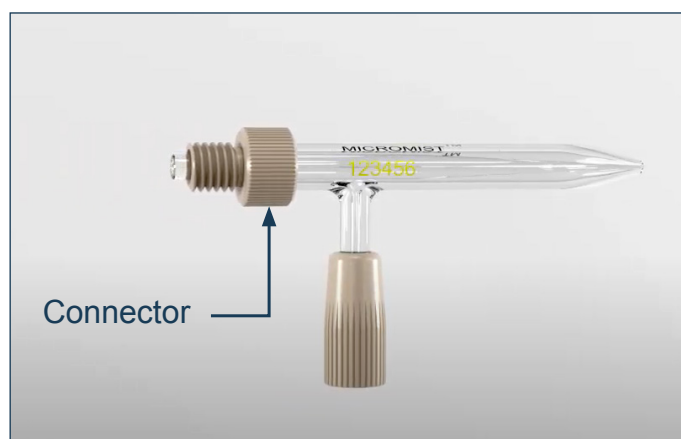


Instructions

1. Using a sharp razor or scalpel, cut the 1/16" sample tube to desired length - The cut end must be square and burr-free.
2. Slide the cap and 1/16" ferrule over the cut end of the tube. Ensure that the 1/16" tube is flush or protruding slightly above the ferrule face.
3. Slide 1/8" connector over the nebulizer liquid arm, ensuring the thread is positioned as shown.



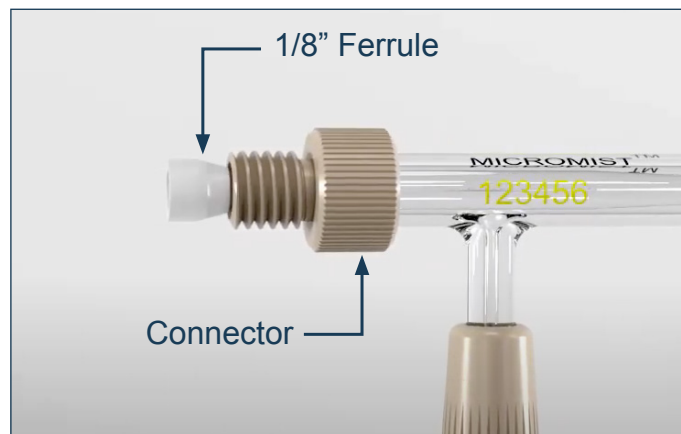
Step 2.



Step 3.

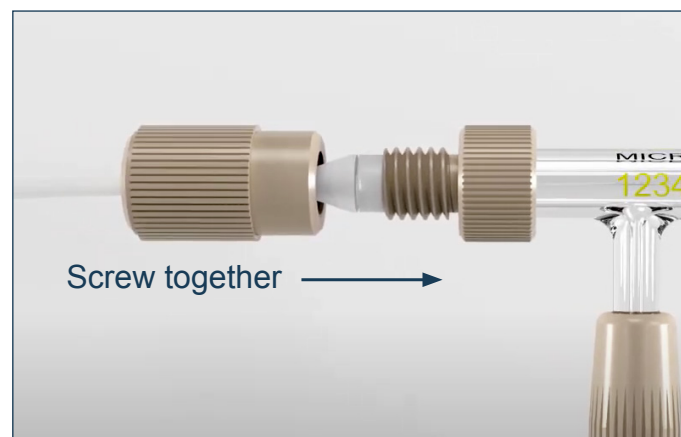
Instructions (continued)

4. Slip the 1/8" ferrule over the end of the nebulizer liquid arm with the tapered portion of the ferrule pointing towards the connector. Position the ferrule so that the nebulizer end protrudes slightly above the ferrule face.



Step 4.

5. Hold the connector and nebulizer in one hand and start to screw together with cap until tight.



Step 5.

6. When finished, pull gently on the sample tube to ensure a firm connection has been made.



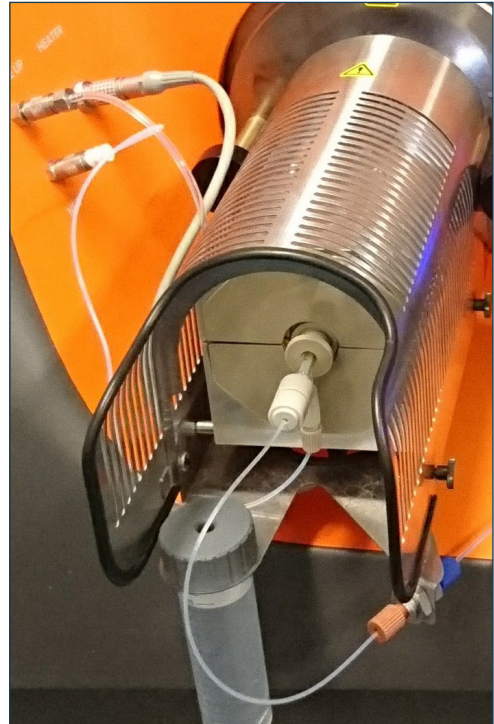
Step 6.

7. Insert the nebulizer into the Nebulizer adaptor port of the spray chamber. Attach the 1/4"-28 Ratchet connector to the front side of the grounding nut.

*Helpful Hints: For more information on Nebulizer maintenance [click here](#)

Finished Setup: Nebulizer Sample Connecting Line Kit is now installed.

Caution! It is advised you wear safety gloves and glasses when handling glass.



Consumables

Replacement consumables can be purchased under the following part numbers.

Part Number	Description
70-803-1315	Tefzel Ferrule 1/16" (PKT 10)
70-803-1316	Tefzel Ferrule 1/8" (PKT 10)

For more information please visit www.geicp.com or contact one of our offices below.

Asia Pacific

6 Central Boulevard, Port Melbourne, VIC
3207, Australia

Telephone: +61 3 9320 1111

Email: enquiries@geicp.com

Americas

31 Jonathan Bourne Drive, Unit 7 Pocasset,
MA 02559, USA

Telephone: 508 563 1800

Email: geusa@geicp.com

Europe

Friedenbachstrasse 9, 35781 Weilburg,
Germany

Telephone: +49 6471 3778517

Email: gegmbh@geicp.com